



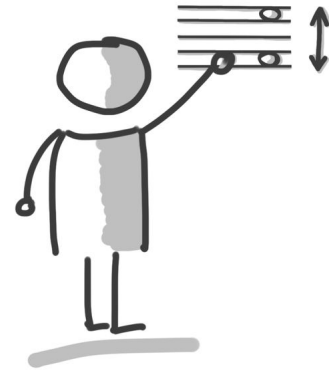
AB: LÖSUNG: Intervalle schreiben

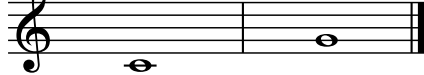
Musik JMLA Bronze

L

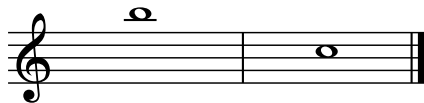
① Grobbestimmung Intervalle

Zeichne die fehlende Note, damit das Intervall entsteht.
Achte auf die **vorgegebene Richtung** in der Klammer.




① 

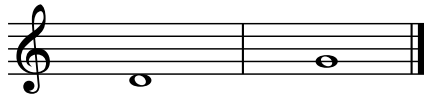
Quinte (aufwärts)

② 


Septime (abwärts)

③ 

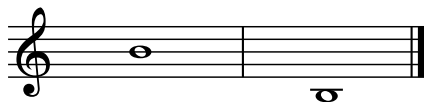
Terz (aufwärts)

④ 


Quarte (aufwärts)

⑤ 


Sekunde (abwärts)

⑥ 


Oktave (abwärts)

⑦ 

Sexte (aufwärts)

⑧ 

Quinte (aufwärts)

⑨ 

Terz (abwärts)





AB: LÖSUNG: Intervalle schreiben

Musik JMLA Bronze

L

10



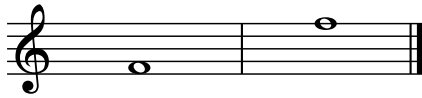
Prime

11



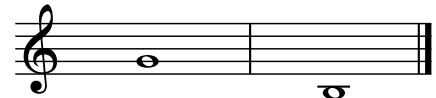
Quarte (abwärts)

12



Oktave (aufwärts)

13



Sexte (abwärts)

14



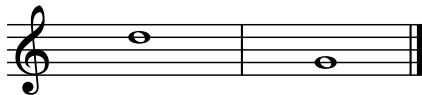
Terz (aufwärts)

15



Sekunde (aufwärts)

16



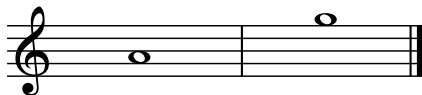
Quinte (abwärts)

17



Quarte (aufwärts)

18



Septime (aufwärts)

19



Sexte (abwärts)

