

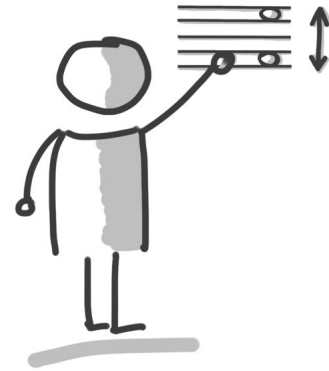


AB: LÖSUNG: Intervalle schreiben

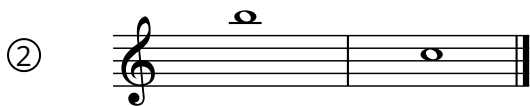
Musik JMLA Bronze

① Grobbestimmung Intervalle

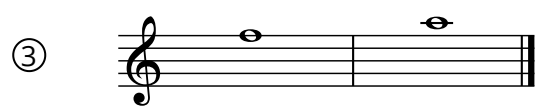
Zeichne die fehlende Note, damit das Intervall entsteht.
Achte auf die **vorgegebene Richtung** in der Klammer.



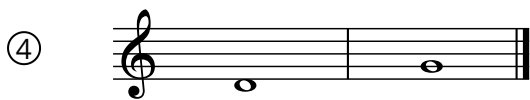
Quinte (aufwärts)



Septime (abwärts)



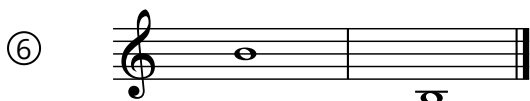
Terz (aufwärts)



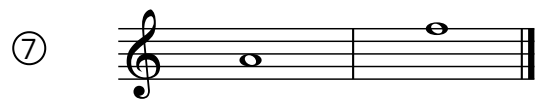
Quarte (aufwärts)



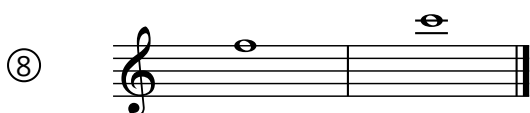
Sekunde (abwärts)



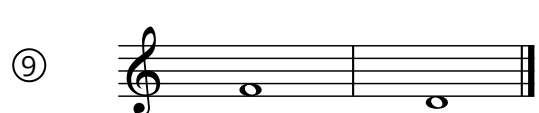
Oktave (abwärts)



Sexte (aufwärts)



Quinte (aufwärts)



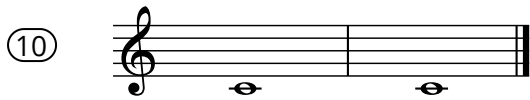
Terz (abwärts)



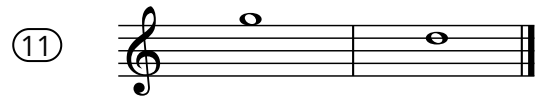


AB: LÖSUNG: Intervalle schreiben

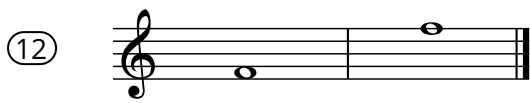
Musik JMLA Bronze



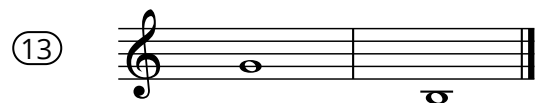
Prime



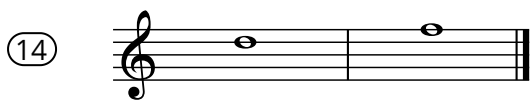
Quarte (abwärts)



Oktave (aufwärts)



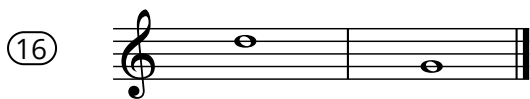
Sexte (abwärts)



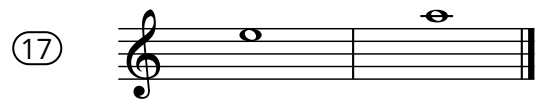
Terz (aufwärts)



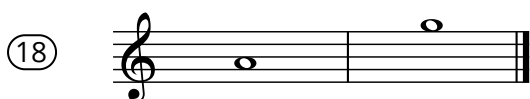
Sekunde (aufwärts)



Quinte (abwärts)



Quarte (aufwärts)



Septime (aufwärts)



Sexte (abwärts)

